



# THE BULLETIN



Published by the Scovill Manufacturing Company for its Employees.

Vol. XXXIV

March 20, 1950

No. 6

## We Should Learn From England

The following is quoted from a booklet entitled "Dare or Despair," published by International Liberal Exchange, 54 Princes Gate, London, S.W. 7. Its author is R. Hopkin Morris, Member of Parliament for Carmarthen. It is added evidence that Socialism and the Welfare State mean Slave Labor.

"In February 1946, Sir Stafford Cripps (Chancellor of the Exchequer in Britain's government) said: 'No country in the world, as far as I know, has yet succeeded in carrying through a planned economy without the direction of labor. Our objective is to carry through a planned economy without the direction of labor...'

"On the 10th of March 1949, the Parliamentary Secretary of the Ministry of Labor announced that between October 1947, and December 1948, '374 directions were issued to men who were in the mining industry compelling them to remain in that industry, and 132 directions were issued to men in agriculture keeping them in agriculture.' . . . In fairness to the government it should be said that no member of it is in favor of the direction of labor. Despite their good intentions they have failed, not because they will tyranny, far from it, but because, ignoring the experience of every other country, they are wedded to the theory of the Planned State . . .

"Today Sir Stafford can repeat his first speech: 'No country in the world, as far as I know, has yet succeeded in carrying through a planned economy without the direction of labor.'"

## New, Revised Manuals Issued To Employees

The Employee Manual titled "Scovill, You and Your Job" was last sent to employees in July of 1948. A new edition with minor changes has been issued and is being distributed to employees in their department.

Employees are again urged to read it carefully. It contains not only many interesting facts about the Company but also rules and procedures with which all employees should be familiar.

## Driver's License Due May 1

The Employee Activities Office again offers its assistance to employees in renewing their Driver's Licenses. If it will not be possible to get your license by May 1, take your application (having signed both copies) and the \$3.00 to cover the cost, to the Office by April 15, and they will get your license for you.

If inconvenient for you to get over to the Employee Activities Office, in the SERA clubhouse, call 834 and arrangements will be made to take care of the matter for you.

## GREEN SPOT Line Featured In Display



Joe Ayotte, Manufacturing Superintendent's Office, demonstrates the water-testing operation of hose couplings at the Housewares Fair, conducted by G. Fox & Company in Hartford, February 14-25. Rose Cincogrono, of the Assembly Room, demonstrated the operation of assembling the couplings.

## Waterville Division Service Awards



Continuous service pins and Certificates of Recognition were awarded to two Waterville Division employees recently. Vice-president and General Manager S. G. Gaillard presented the awards; Plant Engineer G. F. Goggins and Plant Manager L. G. Robinson were on hand to extend congratulations.

Upper photo:—Giuseppe Nocera accepts his 50-year pin with three diamonds; John Donnelly (lower photo) received the 40-year pin with one diamond.

## Inter-Plant Bowling Sweepstakes, March 25

SERA's Sixth Annual Bowling Sweepstakes is set for Saturday, March 25, at Sena's Recreation Center, on North Main Street.

Employees of the Main Plant, Waterville and Oakville Divisions will participate in the event, scheduled from 1:00 to 6:00 p. m.

Prizes will be awarded for each of three classifications:—Class A—bowlers

with 109 average and over; Class B—bowlers averaging 98 to 108 inclusive; Class C—bowlers with averages of 97 and under.

Entry Blanks have been distributed to all known bowlers throughout the plants. They may be returned to the Employee Activities Office or to any of the following committee members:

Chairman Jean Ostroski, Group Insurance; Phil Napolitano, Wet Roll; Al Keane, North Mill; John Latvis, Cutting; John Duigan, Trucking; Don MacIntosh, West Machine; Al Northrop, Cost Office; Julia Donahue, Lacquer; Sid Monti and Tony Masi, Tin Shop; Art Woods, Electrical; Rita Kennedy, Packing B; Louise Longo, Central Time.

## New Safety Glasses Have Tri-Focal Lens

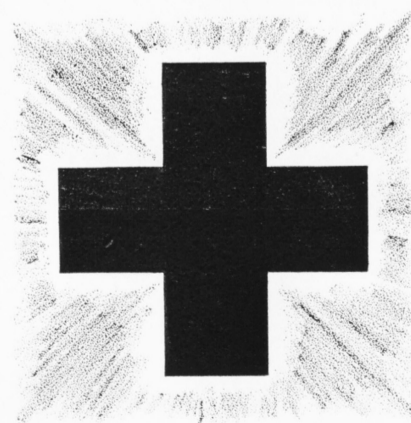
Something new has been added to the line of Safety Glasses.

Wearers of bifocal glasses often have difficulty seeing things in the troublesome 18" to 40" zone between near and far vision. They find that it is necessary to see-saw the head up and down and jockey back and forth to adjust their position distance for what they wish to see clearly.

The new TRI-FOCAL lens will permit the wearer to see in the intermediate zone between 15" and 40". It is proving of great advantage to mechanics, draftsmen, machine operators, clerks, chemists, foremen, engineers and many other occupations.

Employees interested in more detailed information on TRI-FOCALS may call or visit the Safety and Health Department, telephone extension 888.

## March Is Red Cross Month





# THE BULLETIN



Published by the Scovill Manufacturing Company for its Employees.

99 Mill Street, Waterbury, Connecticut  
Supervisor of Publicity: DAVID S. MORELAND  
Managing Editor: MARGARET E. FENSKE  
Staff Artist: TED DEZINNO  
Contributing Staff:

Dora Mori, Dom Polo, Harry Shewbridge, Betty Young

"We pledge ourselves to investigate thoroughly for accuracy before publication the material presented in THE BULLETIN."

Vol. XXXIV

March 20, 1950

No. 6

## Spring

Spring officially will be ushered in at 11:36 p.m. today and, although the past winter was not severe, certainly we are all glad to welcome spring and the approach of warm weather. No more shoveling snow and coal — no more rubbers and overshoes — no more heavy clothing — at least for a few months. However, spring brings other problems such as spring house cleaning — planting gardens — mowing lawns, etc.

We also have with us for some months marbles, baseball, tennis, golf and many other spring and summer sports. Nearly everyone who is physically able wants to get out in the open after being shut-ins all winter. However, some of us in our enthusiasm for the great outdoors get careless. Children and sometimes grown-ups play baseball and other sports in the streets and by so doing become targets for injuries that could be permanent and fatal. Nearly all neighborhoods and community centers have playgrounds equipped for all kinds of sports, and children should be advised to use them.

Spring also brings the dangers of brush and forest fires that in past years have caused thousands of dollars of property damage and some loss of life. So, let us all enjoy our spring weather to the utmost, but let us be careful. No playing in the streets — no lighting of brush fires without a permit — and then only on days with no wind.

By observing these two rules, spring can be much happier for all.

### Rod and Gun Club News

Rod & Gun Club members are looking forward to their annual banquet which will be held at Doolittle Hall on Thursday, March 23, at 6:30 p.m.

The committee has rented five of the latest Field & Stream sports movies. In sound and color, they are: Spinning for Steelhead and Silver, Chalk Stream Fishing, Return of the Pronghorn, Big Mouth Bass, and Steady Now.

### Your Credit Union

Members of Credit Unions #1 and #4 are urged to send in their passbooks so that auditors can audit the books and dividends can be added. All books must be in by April 3.

## Air Can Be Dangerous



Can air in the blood stream kill? The answer is "yes". Recently the newspapers have been carrying much testimony in a court case as to just how much air it takes to kill. The question is not can it — but how much?

There have been deaths and other serious injuries as a result of using air guns as this picture is posed to show. It is a risky and unauthorized practice. Experience has shown that air can suddenly open a passage through pores of the skin or a small cut and pass into the blood stream.

Don't blow compressed air directly toward any part of your body.

# MARCH

S	M	T	W	T	F	S		
			1	2	3	4		
5	6	7	8	9	10	11		
12	13	14	15	16	17	18		
19	20	21	22	23	24	25		
26	27	28	29	30	31			
19						SPRING		50

T. DE ZINNO

### Waterville Division

By Alice

A very delightful evening was spent at the home of MRS. FRANCES CARRINGTON recently. An excellent dinner was served and splendid music was enjoyed along with the usual female chatter. A fire in the fireplace furnished a perfect setting for a most enjoyable time. Those present were: RUTH SUGRUE, MARGARET HORGAN, RITA LOMBARDI, MARIE PENNELL and ALICE LANE. To say the least, MRS. CARRINGTON makes a perfect hostess.

Our deepest sympathy to BETTY GRABHERR who lost her father recently.

It certainly seems good to see the old jalopy replaced by a nice, shiny black Chevrolet! How about that!

### Girls' Club News

By Dora Mori

#### Hat Fashions and Cards

Bright colors, feathers, flowers and all sorts of fruit — if you didn't see them at the Card Party held on March 13, you'll surely be seeing them around town this Spring. They are the latest in Spring fashions for milady's hats!

Approximately 70 members and friends attended the Card Party and had a fine time "oohing" and "ahhing" over the Spring hats displayed by representatives of the Howland-Hughes Company.

We can hardly wait for our annual Banquet — we're sure it'll be colorful.

#### Easter Bunnies

Easter time means Bunny time and, again this year, the Club has the cutest, cuddly yellow bunnies for sale. RUTH TOURANGEAU (Planning) and LUCILLE PEPIN (B & F Production) are in charge of sales.

RUTH will be at the Clubhouse during the noonhour on Monday, Tuesday and Wednesday until Easter. If you're interested in having one of the bunnies, drop in to the Clubhouse and RUTH will be glad to show them to you.

#### Coming Events

Here are a couple of important dates to remember.

April 17—annual meeting and election of Council at the Clubrooms.

April 22—annual banquet, to be held at the Hotel Elton.

The Entertainment Committee is working on arrangements for a weekend excursion to Boston soon after Easter.

### Model Association

On Tuesday, March 7, an election of officers of the Model Club was held at the SERA Clubhouse.

Those elected to office were: president—Lou Thelin, vice-president—Ken Roberge, secretary-treasurer—Willis Pond, contest director — Gordon Weidinger.

The next meeting will be held at the SERA Clubhouse on April 4 at 7:30 p.m. All Scovillites interested in model airplanes are invited to attend.

### Pinochle Tournament

Captain	March 9	Total
Erv Honyotski	30,150	261,375
Bill Mancini	28,855	260,380
John March	26,000	251,115

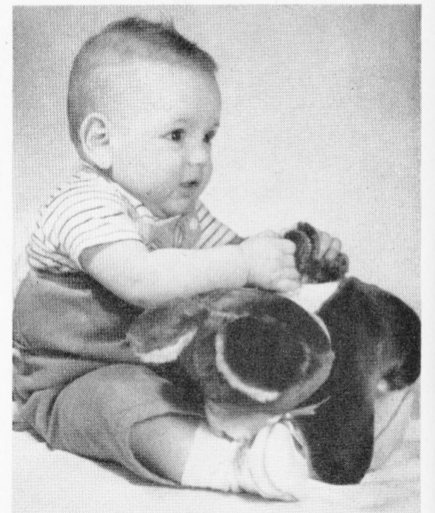
Individual High:

Harry Weiss—4,345.

Archie Hollywood—3,905.

The last night of play for this season will be held on Thursday, March 30. On April 1, the pinochle players will attend their annual banquet at the SERA Clubhouse at 6:30 p.m.

### Macharelli Baby



David Macharelli, six months old, is the son of Alphonse of Lipstick. Grandad Saverio and Uncles "Rep" and Mario Guerrera are also employees of Scovill.

# Service Awards

## Twenty-Five Years



Frank Ragazzino  
Trim & Knurl  
March 8, 1950



Alma Gross  
Chicago Office  
March 9, 1950



Walter Allen  
Los Angeles Office  
March 17, 1950

Mary Dailey  
Closing  
March 10, 1950

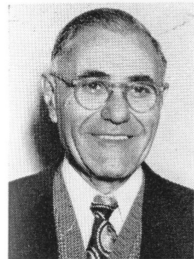
## Ten Years

EDWARD GILBERT, No. Mill Rolls, March 6; NICHOLAS BUONOCORE, Casting, March 8; LUCIEN COLLIN, Tube Mill, March 14; JOSEPH SCONZIANO, Casting, and BEATRICE DEBLASIO, Drawing, March 17.

## Correction, Please

In our March 6 issue we listed Giuseppe Nocera of the Waterville Division as having completed 50 years of service and John Donnelly, also of Waterville, 40 years' service.

This was true but, we are sorry to say, the pictures did not lineup correctly. With apologies to Mr. Nocera and Mr. Donnelly, we print them as they should have been.



Giuseppe Nocera  
Fifty Years  
February 26, 1950



John Donnelly  
Forty Years  
March 1, 1950

## Cribbage Tournament

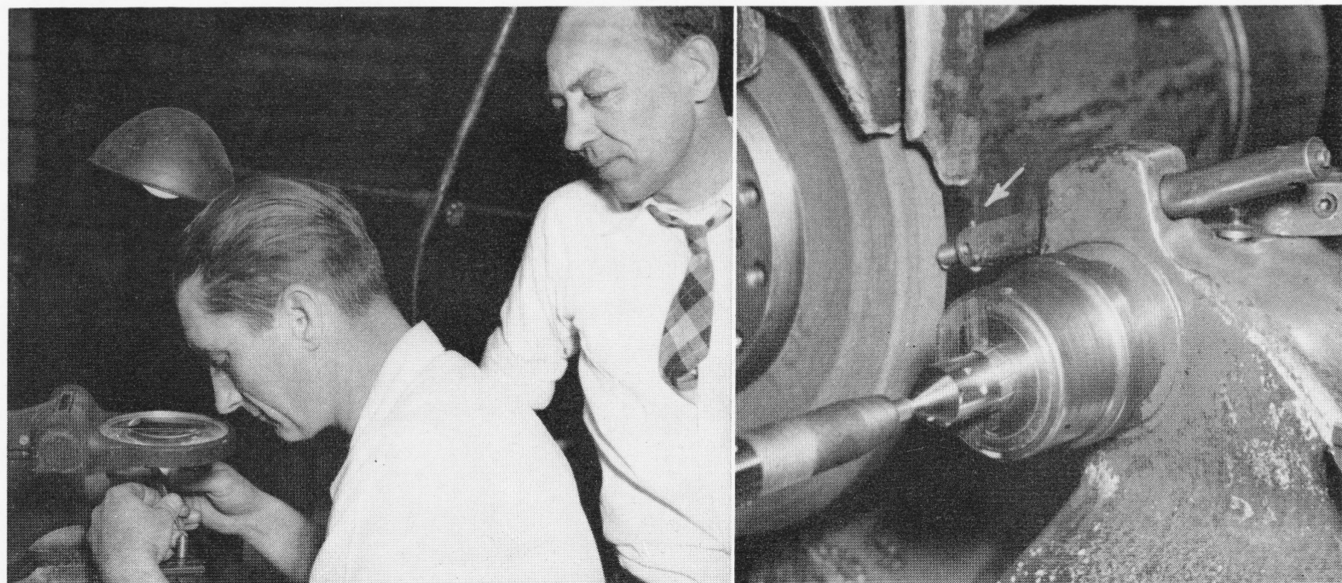
On March 7, the SERA cribbage men met their Chase opponents at the Chase Country Club. Ten games were played, Scovill defeating Chase by 148 points.

Individual high score was taken by SERA also. Charles Pulford and Marty O'Rourke were the winners with 908 points.

On March 14, a return match was played at the SERA Clubhouse. Twelve games were played and Scovill won by 241 points. The SERA team is winner of the annual home-and-home contests by 389 points.

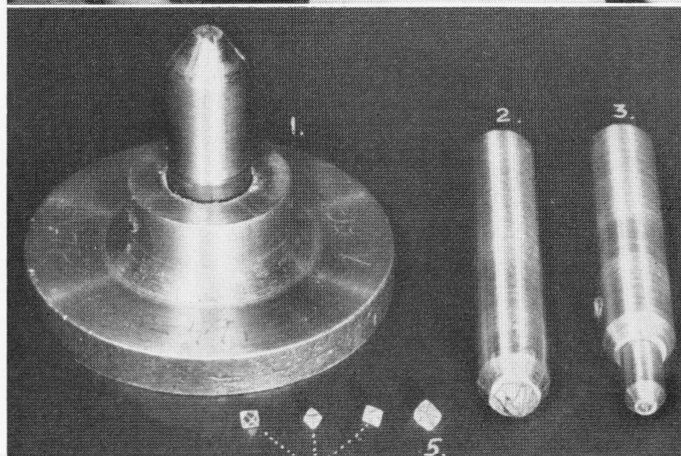
Scovillites Sid Spender and Bill Strokalis had individual high score for the March 14 contest with 1106 points.

# Diamonds Decorate Milady, Also Serve Industrial Field



Upper left:—William Serrell, Sr. sets an "industrial" diamond in a holder as Instructor Charles Mott looks on. This work is so fine that a magnifier (shown in photo) must be used all the while work is being done on the diamonds. Both "diamond setters" are employees of the Repair Room.

Upper right:—Arrow shows a diamond set in a holder, which is applied against the emery wheel, ready for use. Photo taken in Milling & Grinding.



Lower left:—Numbered 1, 2 and 3 are the different types of holders. The three small stones are samples of 1/4 carat size diamond; number 5 is 1/2 carat and the 1-carat size is set in number 2 holder.

The diamond, a precious stone, is the hardest, the most imperishable and the most brilliant of minerals. The diamond has a great variety of natural colorings; white, yellow, and brown specimens are the most common, pure white and fine shades of brown and yellow are quite rare and command high prices. Red in rich, deep tints is perhaps the most prized of all colors, while blue and green are also, highly valued owing to their beauty and rarity. For centuries these types of diamonds have been used as items of jewelry.

### "Industrial" Diamonds

Some diamonds — running from steel-gray to black in color — are unsuitable for precious gems but, due to their extreme hardness, have been found indispensable in industry. They are known as "industrial" diamonds.

At Scovill, from three to four hundred of these diamonds are constantly in use — trimming and shaping emery wheels which are used for grinding, sharpening and making new tools. The sizes of the stones range from 1/4 to 1 carat — the smaller size is used for lighter jobs and the largest for heavier work.

### Diamond Holders

Before the diamonds can be put to actual use, they must be set in holders.

## Camera Club Briefs

Home movies were shown by some of the club members at the March 9 meeting of the Camera Club.

Walter Troske showed his film of the Gene Autry show at New Haven Arena. Robert Blakeslee showed the Mattatuck Drum Corps on their trip to Virginia and Lee Reid had a film on deep sea fishing at Cape Cod.

The next meeting will be held on Thursday, March 23, in the 3rd floor Conference Room of the Spencer Block at 8 p. m. Home movies will be shown. All who are interested in photography are invited to drop over and see what the club is doing.

This operation is performed in the Repair Room by two well-qualified "diamond setters".

There are three types of holders, all made of low carbon steel.

One holder, number 2 in photo, which is similar in shape to a lead pencil, is about 7/16" in diameter and 2 to 3" long.

The second type, number 1, is set in a secondary holder so that it can be held on a magnetic chuck to be held against the emery wheel for resurfacing purposes.

Holder number 3, 1" long and 1/4" in diameter, is a special holder for 1/4 carat diamonds which would certainly be lost in the 7/16" holder. It must also be affixed to a secondary holder (the 7/16" size) and is held in place by a set screw.

### Setting The Diamond

Six slots are sawed at the tip end of the holder to serve as prongs. The diamond, which may have four or five points, is set in the holder with one point protruding. The prongs are clamped together by hand with a small steel drift and the point is brazed with silver solder to hold the diamond firmly in place.

With normal amount of care and wear, each diamond point will last from three to four weeks. When it becomes dull from wear, the holder is sent back to the Repair Room for re-setting. The head of the holder must be cut off by a lathe; the diamond is

removed easily due to the use of the low carbon steel. The same procedure is followed in setting the new point.

When all points have been worn beyond use, the diamond is sent back to the supplier where it is ground into a fine dust and returned to us.

Even as dust, the diamond is of value to us. It is used for polishing carbide tools — producing a very smooth surface — and is a "must" in polishing a carbide drawing die.

## U.S.-Canada College Exchange Student



Erma Brittain, daughter of Ruth Brittain of Slide Fastener, represented the Junior class of New Haven State Teachers College in the Canadian-American College exchange program recently. She is now at Carleton College in Ottawa where she will audit four college courses and participate in student activities for a month.

## Woodtick Gardens

It is now time for all who plan to have a garden at Woodtick to call the Employee Activities Office (phone 834) for a reservation. It is necessary that you contact the office early in order that the required number of plots may be prepared.

The gardens will be plowed and harrowed and made ready for planting as early as possible when the ground dries out sufficiently.

## Classified Ads

### For Sale

Lot in Fairlawn, 50 x 115, near bus and school, all improvements. Call 3-7779.

Two-piece living room suite; 9-piece mahogany dining room set; two 8 x 10½ American Oriental rugs; Glenwood kitchen range, ivory, oil and gas combination. Call 5-0017.

Three-piece walnut bedroom set, very good condition. Call 3-4018.

Fairmount, white combination oil and gas stove, excellent condition, \$100. Call 5-0588.

Crosley Shelvador refrigerator, 1947 model, \$135. Call at 174 Bridge St.

Wakefield baby carriage, \$15; Taylor Tot, \$7; excellent condition. Call 4-6803.

"Magic Wash" washing machine, excellent condition, motor recently overhauled, no attached water pump, \$20 delivered in Waterbury area. Call 4-2515 after 4 p. m.

Brown Skipper coat with zip-in lining, size 16; pair of brown walking shoes, size 9½ AAAA, excellent condition, pair of bowling shoes, size 9. Call 4-7687 after 6 p. m.

Two super DeLuxe Goodyear tubes, size 7:00x15 to 7:60x15, never used; will sacrifice. Call 4-5324 after 5 p. m.

White porcelain ice box. Call 5-8311.

Dark green dress, never used; blue dress with white polka dots, slightly used, both size 48; pair of French doors, 1¾" thick oak; 30-gallon automatic hot water tank; 4 & 4 white range, like new. Call at 49 Sheffield St., Waterville.

Royal portable typewriter; 16mm projector w/screen, 2 rolls of 300' and 1 roll of 400' film; 15" drill press w/revolving table; 2 grinding wheels with two 6" wheels; 1/6 HP motor; Admiral portable radio. Call 4-0335.

White gas range, two years old; porcelain table with 3 chrome chairs, \$10. Call Wtn. 1779-W.

1938 Chevrolet sedan, \$500.00. Practically new tires, new clutch, new battery. Mileage 38,000. Call Ext. 531.

Boy's gray covert cloth spring coat and cap, brown checked suit, white Palm Beach suit, reversible jacket, for 7-year-old boy. Call 3-5477 between 9 a. m. and noon.

Large gas heater with flue pipes, good condition, \$8. Call 6-0270 or call at 95 Wolcott St., 2nd floor.

Revere camera, 8mm-exposure guide and screen, A-1 condition, \$65; Zenith console, A-1 condition, \$75. Call 3-5917.

Registered pedigree dachshund puppy, 10 weeks old, \$25; mother dachshund, 2 years old, \$60. Call 3-0521.

Kitchen table with white porcelain top, 6 chairs, \$15, good condition. Call 5-5614.

Extension ladder, 40', like new, will sell for half price. Call 3-1429.

Ten-piece American walnut dining room suite. Call 3-2008.

1933 Oldsmobile, 4-door sedan, good condition, \$50. Call 5-2309.

Toolmaker's box and tools; fishing equipment—rods, reels, creel and plugs. Call 5-8960.

Kitchen range, equipped with Florence oil burner, slightly used. Call 5-9038.

### Rent Wanted

Young couple with two children need 4 or 5-room rent. Call 5-8744.

### Found

Lady's wedding ring in Press 1; 2 keys on key-ring in Bldg. 55, 3rd floor hallway. Call Ext. 345.

## Scovill Bowlers In IRA League



Representing Scovill in the IRA Bowling League—Women's Division—are: (left to right) Bernice Knickerbocker, Ann Kisonas, Marguerite Muroff, Helen Sanda and Jean Ostroski. The girls are in second place with 54 wins, 18 losses. Jean Ostroski holds second high average with 109.18.

In the Men's Division, the Scovill team consists of: Phil Napolitano, Chris Poulsen, Marty Byrne, Joseph Montville and Benny Bannick. Leading in the League, the men have won 51, lost 15. Phil Napolitano has high single, 179; Marty Byrne high average, 125 and high three, 447. The team has high single, 694 and high three game, 1894.

## Three Succumb

### John Pace

JOHN PACE, retired, died on March 3, 1950.

Mr. Pace first came to Scovill in September, 1906, and had served the Company continuously for twenty-six years when he was retired in 1932. All of his years here were spent in the Buff Room.

### Walter Stoveken

WALTER STOVEKEN, ASMD, was the victim of an airplane crash on March 7, 1950.

Mr. Stoveken had been with Scovill continuously for over nine years, with a two-year break during which time he served in the U. S. Navy. He was a toolsetter in ASMD at the time of his death.

### Robert Herr

ROBERT HERR, retired, died on March 12, 1950.

Mr. Herr had a continuous service record of thirty-six years when he was retired on January 15, 1933. He had always been connected with the Tool & Machine Division where he served as a toolmaker.

## Life Out East

By Harry Shewbridge

There's always something new turning up "Out East" and this is the latest—not chicken-in-the-basket but shoe-in-the-basket! Can you imagine a guy putting his foot in a waste basket and then not being able to get it out! ART ROBERTS up on the sixth floor can furnish the details. Need I say more?

And while we're on this floor, they tell me that MARGARET GRIFFIN is quite a dancing instructor. This is a free ad, MAGGIE!

The Suburban Club has added a new member. This one is from Bristol Terrace. JOHN PYATT (please call him JACK) has moved from the Slide Fastener Tool Room to the East Planning Office. He's been on the move so much since he joined us that he's afraid he'll be worn down to my size!

By the way, are all you people in Slide Fastener aware of "Fearless Smoky" HYDE? He isn't afraid of anything, not even a pipe! They say it gets pretty foggy in the office some days, DAVE!

And the mystery question of the week is who is the girl we call "Back Stairs Beulah" who has a theme song called, "Slipping Around"?

Then there is the case of KATHERINE BEERS of ASMD. She lives in Bethlehem. Her post office is in Washington and her telephone is Woodbury. In order to make things less confusing, she is considering moving to East Morris. Then she will receive her mail in Thomaston and her telephone will be Litchfield. Confusing, isn't it!

I would like to include my personal regrets, along with all the people of ASMD, at the recent tragic loss of WALLY STOVEKEN. Not only was he a promising toolsetter in the eyes of his superiors but a swell guy to all the fellows he worked with. We'll all miss him.



By Dom Polo

Here's to a speedy recovery for DENNY SHANAHAN who is out ill. Hope you are feeling better, DENNY.

Orchids to FRANK ZACCAGNINI's wife who made a delicious spaghetti supper for some of the boys in the Mill. Those who attended were: BILL GOGGINS, AL LUPICA, JOHN SHIMKUS, DOM POLO and CARMEN ROSATO.

Best wishes to our former office clerk, ALVINA GREVE, who was married recently. She is now MRS. CHARLES MARTIN of the Bulletin Office.



All the information necessary to properly identify either you or any enrolled member of your family as a Blue Cross member is contained on that little membership card you received when you enrolled.

Chances are that the hospital will want to see it should you require hospitalization—but even if you don't have it with you, Blue Cross is set up so that you'll still be accepted as a member pending further verification by the hospital with the Blue Cross office. However, having your membership card with you at the time you arrange for admittance to a hospital will eliminate unnecessary delay.

If you can't find your membership card, let the Blue Cross Office know. A request will then be forwarded to Blue Cross for replacement of the missing card.

Published by  
SCOVILL MANUFACTURING COMPANY  
99 Mill Street, Waterbury, Conn.  
Return Postage Guaranteed

POSTMASTER—If addressee has removed and new address is known, notify sender. Dept. B, on Form 3547, postage for which is guaranteed by the sender.

Sec. 54166, P. L. & R.  
U. S. POSTAGE  
PAID  
WATERBURY, CONN.  
PERMIT No. 123